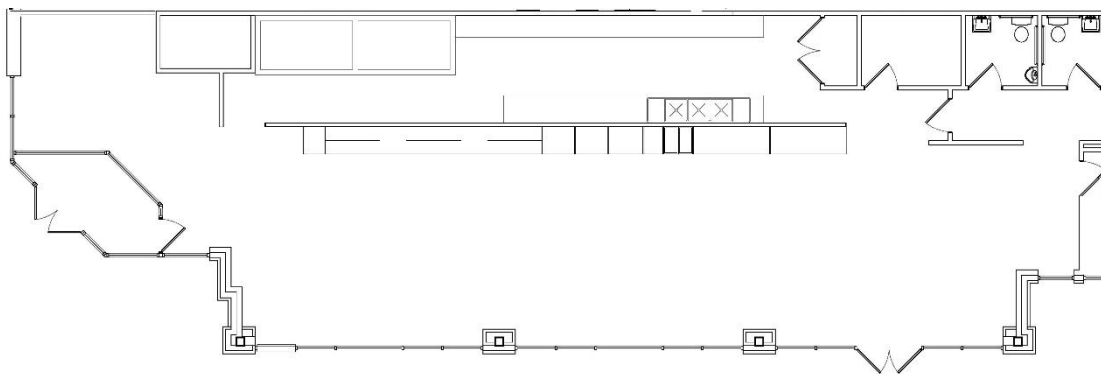


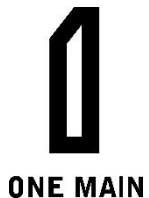
Prime Ground Floor Retail Space Available for Lease Heart of Downtown Champaign



One Main Plaza Suite 107 3,034 SF \$18/SF NNN



- Class A premier building in the heart of Downtown
- Located on the corner of Main St. and Fremont Ave.
- Great location amidst dining and shopping, theaters, parks, and more
- Easily accessible to people who live and work Downtown
- Built-out with kitchen, restrooms, seating and more; or build-to-suit available
- Public transportation to all of C-U
- Energy efficient building and utilities
- Professionally managed



One Main Management, LLC
1 E. Main St. Suite 200
Champaign, IL 61820
Sales@1-main.com 217-531-1122