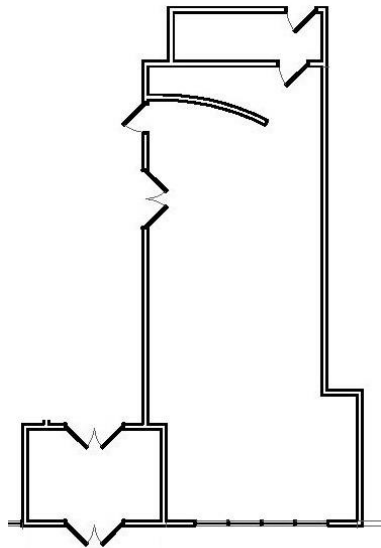


Prime Ground Floor Retail Space Available for Lease Heart of Downtown Champaign



**One Main Plaza
Suite 102
944 SF
\$1950/month**



- Gross lease includes all Common Area Expenses
- Class A premier building in the heart of Downtown
- Ground Floor facing One Main Plaza
- Build to Suit
- Great location amidst dining and shopping, theaters, parks, and more
- Easily accessible to people who live and work Downtown
- Public transportation to all of C-U
- Energy efficient building and utilities
- Professionally managed



One Main Management, LLC
1 E. Main St. Suite 200
Champaign, IL 61820
Sales@1-main.com 217-531-1122